

VISUAL ARTS

4TH & 5TH GRADE ACTIVITIES

.....

Introduction: Shapes are everywhere. We see them all around us. We see them in nature. We see them in our homes and out on the street. Some shapes are considered geometric, like the shapes we use in math. Other shapes we call freeform because they are their own unique shape. Today, we will use different shapes to create a silhouette drawing.

.....

Materials : Paper, something to draw with: a pencil or pen

Optional: ruler, crayons, markers, colored pencils, scissors

.....

MENTOR ARTIST KARA WALKER

Kara Walker is an American artist who works with a variety of materials, but she is best known for her room-sized silhouette art, which uses cut paper. With her art, she leads the viewer to think about important subjects, like identity, racism and history.



“There’s no diploma in the world that declares you an artist—it’s not like becoming a doctor. You can declare yourself an artist and then figure out how to be an artist.”

- Kara Walker

VOCABULARY

COLLAGE

Art made from cut or torn paper that is glued down

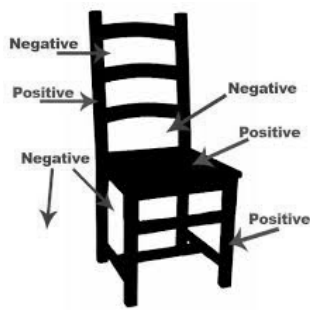


SILHOUETTE

A type of art where the object is one solid color, usually on a plain background. Traditionally, silhouettes were portraits of people made from cut black paper.



POSITIVE SPACE / NEGATIVE SPACE



The positive space is the object, while the negative space is the background.

VALUE

Darkness and lightness (black, white and gray are all values).



GEOMETRIC SHAPES

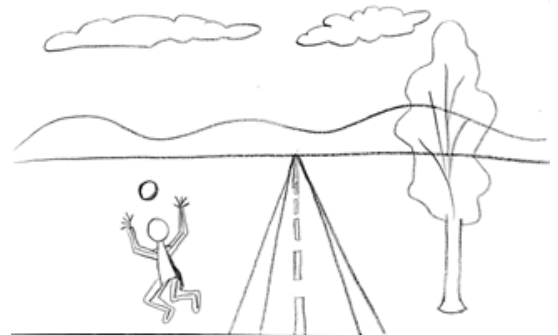


FREEFORM SHAPES



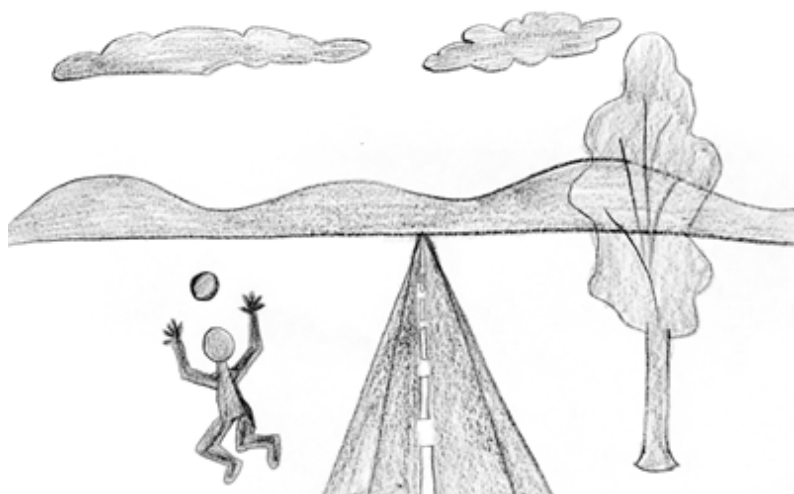
CREATING A SILHOUETTE DRAWING

STEP 1 Using lines, draw out objects, people, or scenery onto your paper. Think about objects from nature (trees, mountains, clouds), objects made by people (cars, buildings, furniture), as well as creatures (human, animal, or imaginary) that you might want to include in your drawing.



STEP 2

Shade a dark tone inside the lines, using a pencil, pen or other writing utensil. Try shading in lightly at first.



STEP 3

Add more layers of shading to some of your objects. Make an artist's choice about which objects to make darker, medium, light, or white.

Artist Tip: Shade objects darker to make them seem closer.



STEP 4

Make an artist choice about which objects to keep white, and which objects to shade gray or black. If you add darker shades to one part of your object, it might even look like shadows.

Don't forget to sign your name



DRAW YOUR SILHOUETTE ART HERE.

